



Soul

From Personal to Planetary

SOUL Festival Special Offer

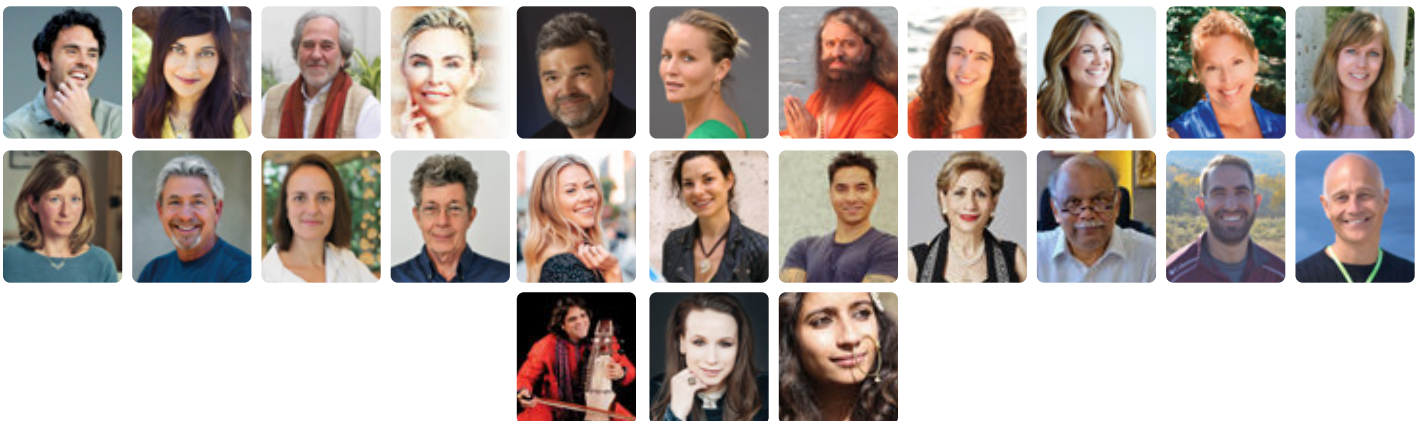
September 29 - October 8, 2023

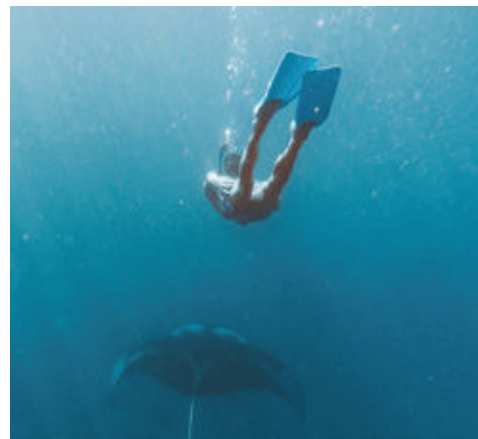
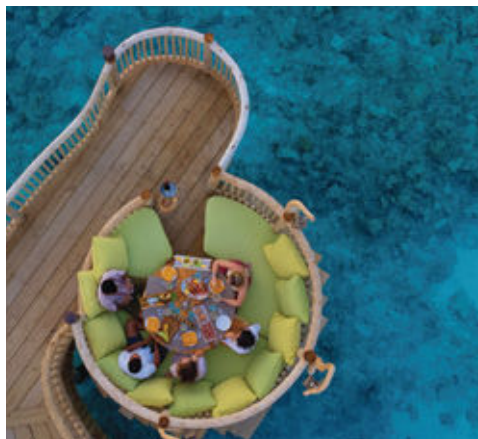


Immerse yourself in an exploration of wellness in all its forms during the first-ever SOUL Festival at Soneva Fushi. Stay for a minimum of three nights and enjoy full access to the festival programme, including gala events on the sand, speaker sessions and experiential workshops, as well as daily full board dining, return domestic transfers and 24/7 Barefoot Guardian service. Learn more about SOUL Festival [here](#).

Festival Line-Up

Dr Nasha Winters • Amanda Huggins • Bruce Lipton • Damon Gameau • Davina Taylor •
Emeran Mayer • Dr Libby Weaver • Dr Lilly-Marie Blecher • Gaia Vince • Jo Marchant • Louie
Schwartzberg • Robert Svoboda • Sadhvi Bhagwati Saraswati • Shamini Jain • Shauna Shapiro •
Swami Chidanand Saraswati • Luke Coutinho • Farida Irani • Dr Paul Salins • Anders Olsson
• Dr Timothy Doolin • Dr Joanna Hooper • Ustad Kamal Sabri •
Kristin Hoffman • Bawari Basanti





Villa Type	Introduction to SOUL 3-Night Package	Extra Night
One Bedroom Villa Suite with Pool	USD 7,600/Villa	USD 2,500/Villa
Two Bedroom Villa with Pool	USD 12,800/Villa	USD 4,300/Villa
Two Bedroom Villa Suite with Pool	USD 15,700/Villa	USD 5,200/Villa
Three Bedroom Villa Suite with Pool	USD 19,400/Villa	USD 6,500/Villa
Early Bird Offer	Book by August 31, 2023, to receive a 10% reduction on the package rate	

Rate inclusions:

- This package is valid for a minimum three-night stay.
- Full access to the Soneva Soul Festival programme, including events, sessions and workshops for two guests per one-bedroom villa, four guests per two-bedroom villa and six guests per three-bedroom villa.
- Registration for events, sessions and workshops is on a first-come, first-served basis.
- Daily full board (breakfast, lunch and dinner, food only) at Mihiree Mithaa, Down to Earth, Fresh in the Garden, Out of the Blue and other assigned dining destinations.
- A 20% reduction on Soneva Soul treatments (excluding Wellness Specialists and In-Villa Services).
- Additional guests, including daily full board dining and full access to the SOUL Festival programme, is charged as follows: USD 1,000 nett per adult (aged 15 and above) per night; up to two children aged 14 and below are complimentary when staying in a one- and two-bedroom villa and are limited to four children when staying in a three-bedroom villa. These additional charges exclude transfers.
- Complimentary round-trip wheeled plane domestic transfers between Velana International Airport (Malé) and Soneva Fushi, for two guests per bedroom. For round-trip Soneva Seaplane flights, there is a supplement charge of USD 585 nett per adult and USD 295 nett per child under 15 years old.
- For additional guests, domestic transfers are charged as follows: Soneva Seaplane, USD 900 nett per adult, USD 450 nett per child under 15 years old; Wheeled plane transfers are charged at USD 315 nett per adult and USD 160 nett per child under 15 years old.
- Complimentary access to The Den, one of the largest dedicated children's clubs in the Indian Ocean.
- A 24/7 Barefoot Guardian, as well as personal bicycles and tricycles in every villa (electric buggies can be provided upon request).
- Welcome drink and cold towel upon arrival, with a selection of Maldivian amenities, homemade chocolate, ice creams, fresh fruit and deli items from the cheese room.
- Use of the Observatory, Cinema Paradiso, shared yoga and meditation sessions at designated times.
- Complimentary use of the gym, tennis and padel courts, and non-motorised water sports.
- Complimentary use of wireless internet (WiFi) in the villa and designated public areas.

Villa Type	Immersion into SOUL 5-Night Package	Extra Night
One Bedroom Villa Suite with Pool	USD 11,700/Villa	USD 2,300/Villa
Two Bedroom Villa with Pool	USD 19,700/Villa	USD 3,900/Villa
Two Bedroom Villa Suite with Pool	USD 24,200/Villa	USD 4,800/Villa
Three Bedroom Villa Suite with Pool	USD 29,900/Villa	USD 6,000/Villa
Early Bird Offer	Book by August 31, 2023, to receive a 10% reduction on the package rate	

Rate inclusions:

- This package is valid for a minimum three-night stay.
- Full access to the Soneva Soul Festival programme, including events, sessions and workshops for two guests per one-bedroom villa, four guests per two-bedroom villa and six guests per three-bedroom villa.
- IV Jet Lag Recovery
- 1 complimentary experience from the below list
 - Sunset Dolphin Cruise
 - Sandbank Breakfast with Sunrise Stargazing
 - Sunbathing on the Sandbank
 - House Reef Surf Lesson
 - Private Guided Snorkelling by our Marine Biologist
 - Private Stargazing
 - Island Hopping by speedboat
 - Cooking Class (healthy cuisine focus)
- Registration for events, sessions and workshops is on a first-come, first-served basis.
- Daily full board (breakfast, lunch and dinner, food only) at Mihiree Mithaa, Down to Earth, Fresh in the Garden, Out of the Blue and other assigned dining destinations.
- A 20% reduction on Soneva Soul treatments (excluding Wellness Specialists and In-Villa Services).
- Additional guests, including daily full board dining and full access to the SOUL Festival programme, is charged as follows: USD 1,000 nett per adult (aged 15 and above) per night; up to two children aged 14 and below are complimentary when staying in a one- and two-bedroom villa and are limited to four children when staying in a three-bedroom villa. These additional charges exclude transfers.
- Complimentary round-trip wheeled plane domestic transfers between Velana International Airport (Malé) and Soneva Fushi, for two guests per bedroom. For round-trip Soneva Seaplane flights, there is a supplement charge of USD 585 nett per adult and USD 295 nett per child under 15 years old.
- For additional guests, domestic transfers are charged as follows: Soneva Seaplane, USD 900 nett per adult, USD 450 nett per child under 15 years old; Wheeled plane transfers are charged at USD 315 nett per adult and USD 160 nett per child under 15 years old.
- Complimentary access to The Den, one of the largest dedicated children's clubs in the Indian Ocean.
- A 24/7 Barefoot Guardian, as well as personal bicycles and tricycles in every villa (electric buggies can be provided upon request).
- Welcome drink and cold towel upon arrival, with a selection of Maldivian amenities, homemade chocolate, ice creams, fresh fruit and deli items from the cheese room.
- Use of the Observatory, Cinema Paradiso, shared yoga and meditation sessions at designated times.
- Complimentary use of the gym, tennis and padel courts, and non-motorised water sports.
- Complimentary use of wireless internet (WiFi) in the villa and designated public areas.

Villa Type	Deep dive into SOUL 10-Night Package	Extra Night
One Bedroom Villa Suite with Pool	USD 21,700/Villa	USD 2,200/Villa
Two Bedroom Villa with Pool	USD 36,500/Villa	USD 3,700/Villa
Two Bedroom Villa Suite with Pool	USD 44,900/Villa	USD 4,500/Villa
Three Bedroom Villa Suite with Pool	USD 55,400/Villa	USD 5,500/Villa
Early Bird Offer	Book by August 31, 2023, to receive a 10% reduction on the package rate	

Rate inclusions:

- This package is valid for a minimum three-night stay.
- Full access to the Soneva Soul Festival programme, including events, sessions and workshops for two guests per one-bedroom villa, four guests per two-bedroom villa and six guests per three-bedroom villa.
- IV Jet Lag Recovery
- 3 complimentary experiences from the below list
 - Sunset Dolphin Cruise
 - Sandbank Breakfast with Sunrise Stargazing
 - Sunbathing on the Sandbank
 - House Reef Surf Lesson
 - Private Guided Snorkelling by our Marine Biologist
 - Private Stargazing
 - Island Hopping by speedboat
 - Cooking Class (healthy cuisine focus)
- Registration for events, sessions and workshops is on a first-come, first-served basis.
- Daily full board (breakfast, lunch and dinner, food only) at Mihiree Mithaa, Down to Earth, Fresh in the Garden, Out of the Blue and other assigned dining destinations.
- A 20% reduction on Soneva Soul treatments (excluding Wellness Specialists and In-Villa Services).
- Additional guests, including daily full board dining and full access to the SOUL Festival programme, is charged as follows: USD 1,000 nett per adult (aged 15 and above) per night; up to two children aged 14 and below are complimentary when staying in a one- and two-bedroom villa and are limited to four children when staying in a three-bedroom villa. These additional charges exclude transfers.
- Complimentary round-trip wheeled plane domestic transfers between Velana International Airport (Malé) and Soneva Fushi, for two guests per bedroom. For round-trip Soneva Seaplane flights, there is a supplement charge of USD 585 nett per adult and USD 295 nett per child under 15 years old.
- For additional guests, domestic transfers are charged as follows: Soneva Seaplane, USD 900 nett per adult, USD 450 nett per child under 15 years old; Wheeled plane transfers are charged at USD 315 nett per adult and USD 160 nett per child under 15 years old.
- Complimentary access to The Den, one of the largest dedicated children's clubs in the Indian Ocean.
- A 24/7 Barefoot Guardian, as well as personal bicycles and tricycles in every villa (electric buggies can be provided upon request).
- Welcome drink and cold towel upon arrival, with a selection of Maldivian amenities, homemade chocolate, ice creams, fresh fruit and deli items from the cheese room.
- Use of the Observatory, Cinema Paradiso, shared yoga and meditation sessions at designated times.
- Complimentary use of the gym, tennis and padel courts, and non-motorised water sports.
- Complimentary use of wireless internet (WiFi) in the villa and designated public areas.

Terms & Conditions:

- This offer is valid for the worldwide market
- This offer cannot be combined with any other Soneva offers, but is combinable with the Repeater Discount
- Bookings taken outside of these dates are not eligible for this offer
- The Booking Code **SS3N22** must be indicated when making a reservation
- This offer is only applicable for individual bookings and is not applicable for groups, conferences or meetings
- Advanced reservation is required and subject to availability
- The package requires 15% non-refundable deposit, on confirmation and full deposit requires 30 days before arrival
- Reservations can be made by contacting your preferred travel agents or our Reservations Team at **E: reservations@soneva.com** or **T: +960 660 4300**
- The Soneva Soul Festival will be fully streamed, and guests attending the festival may appear on video footage available online



SOUL Festival will be video streamed and guests attending the festival may appear on video footage available online

