



3 Bedroom Island Reserve (Villa 34)

Total Area 1,796 sqm. /19,332 sq.ft. | Max Occupancy – six adults and two children





Villa 34's wholly unique design is inspired by the gentle, undulating curves that are found in nature. This three bedroom beachfront villa is a sprawling 1,956 sqm with not a straight line in sight. It has a freshwater swimming pool and children's pool with its own water slide. There is also a children's treehouse by the pool.

On the ground floor the separate Master Suite has an outdoor bathroom with a water feature. The ground floor is also home to the spacious open-plan living and dining area, as well as the kitchen, chocolate room and wine vault. The dedicated gym, sauna and steam room suite comes with its own outdoor bathroom with a water feature. On the first floor, the two guest bedrooms are joined by a roped gangway, each with an en suite bathroom and toilet. This villa's viewing tower is crowned with a dining table, which is the highest point on the island.





The Details

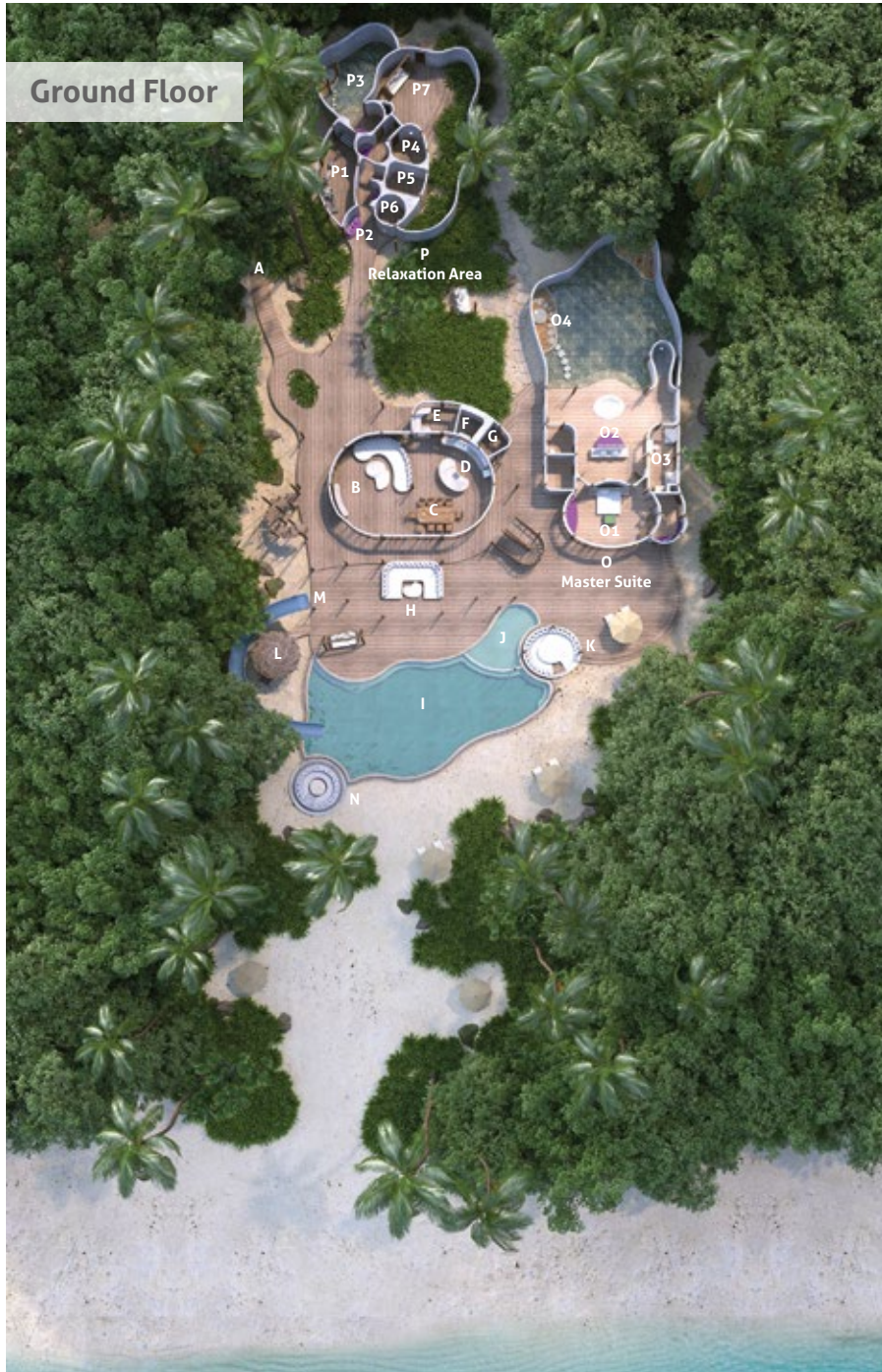
- Three bedrooms throughout this double-storey villa
- Two outdoor bathrooms with water features
- One guest toilet
- Flat screen TV and sound system
- Freshwater swimming pool and children's pool with water slide
- Spacious open-plan kitchen, dining room and living room
- Minibar with an espresso machine
- Dedicated gym, sauna and steam room suite
- Viewing tower with a dining table
- Wine vault and chocolate room
- Library
- Roped gangway
- Two sunken outdoor dining areas, one covered and one uncovered
- Outdoor deck, daybeds and sun loungers
- Bicycles or tricycles for every guests
- WiFi
- In-villa safe, air conditioning and fans
- Barefoot Butler service

For reservations please contact:

T: +91 124 4511000

E: reservations@soneva.com

soneva.com



- A Entrance
- B TV Lounge
- C Dining Area
- D Kitchen and Minibar
- E Chocolate Room
- F Wine Vault
- G Storage
- H Daybed
- I Pool
- J Children's Pool
- K Sunken Seating
- L Children's Tree House
- M Water Slide
- N Uncovered Sunken Seating

- O **Master Suite**
 - O1 Bedroom
 - O2 Master Bathroom
 - O3 Dressing Room
 - O4 Outdoor Shower
- P **Relaxation Area**
 - P1 Gym
 - P2 Daybed
 - P3 Outdoor Shower
 - P4 Steam Room
 - P5 Sauna
 - P6 Toilet
 - P7 Swing



- Q Guest Suite 1**
- Q1 Bedroom
- Q2 Bathroom
- Q3 Dressing Room
- Q4 Toilet
- R Library
- S Deck
- T Rope Bridge

- U Guest Suite 2**
- U1 Bedroom
- U2 Dressing Room
- U3 Bathroom
- V Tower
- W Dining Area